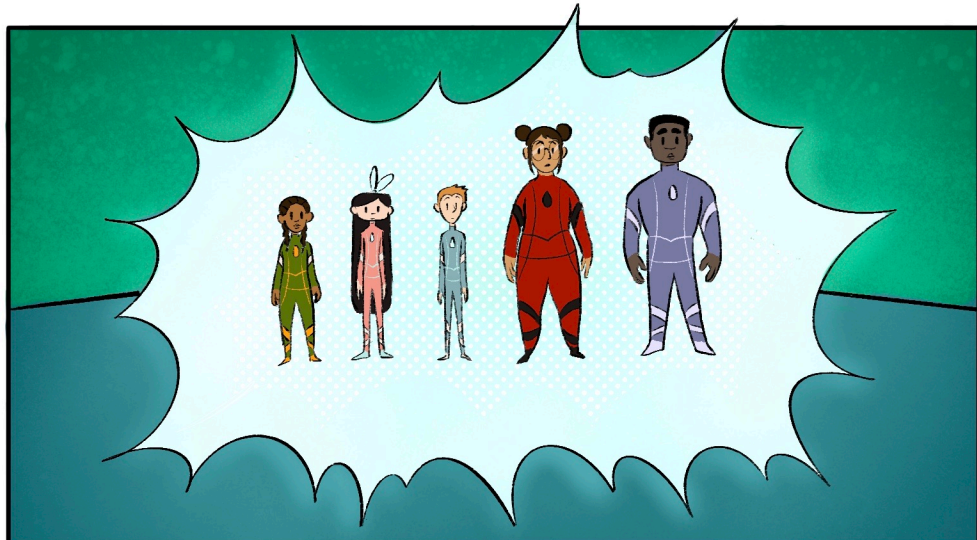


CHAPTER 7

CLIMATE CHANGE





Y'KNOW, I THINK I'M REALLY THRIVING
ON THE CHAOTIC WAY WE TRAVEL.

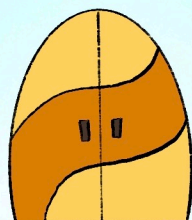


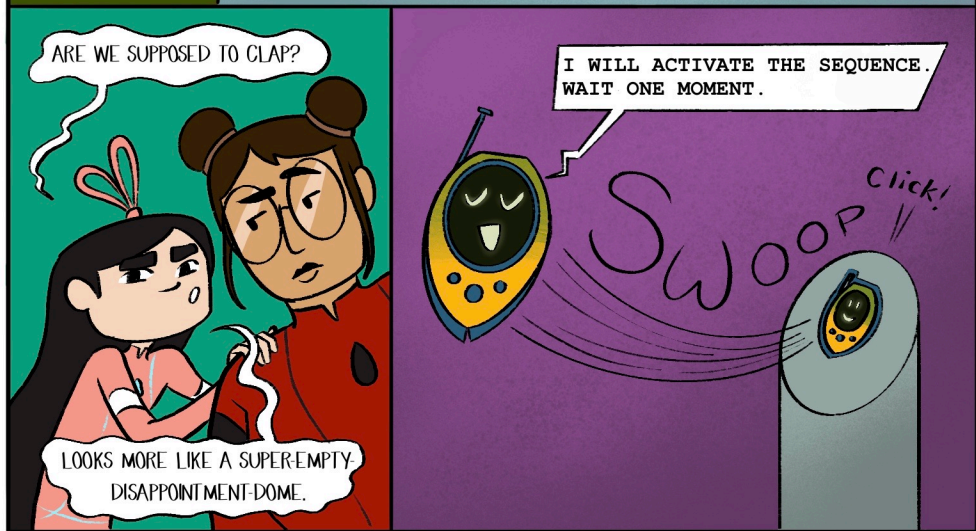
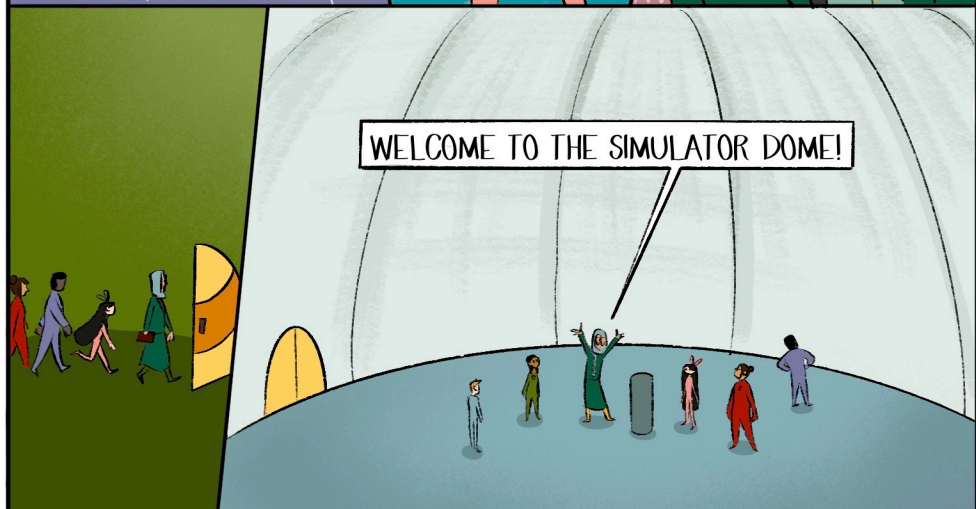
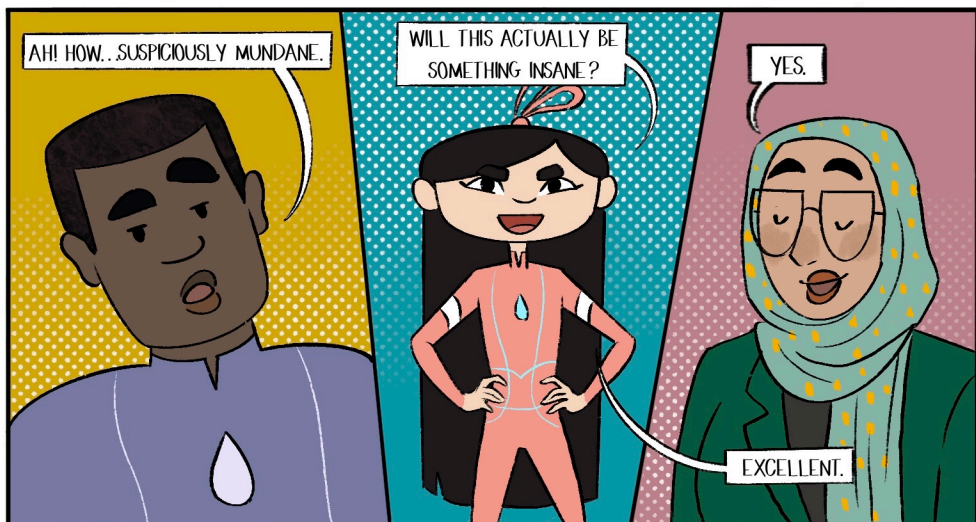
I'M GLAD YOU'VE ALL
HAD A BIT OF A REST
FROM YOUR OTHER
ADVENTURES,



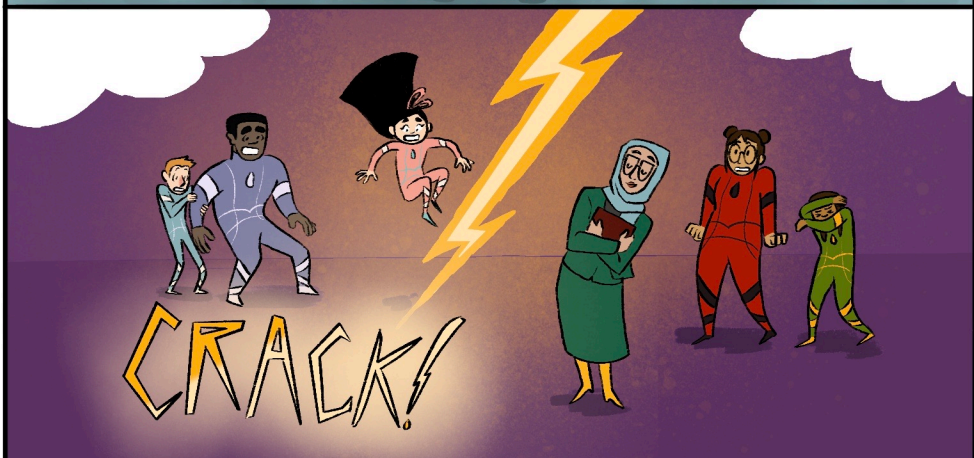
BECAUSE WE'RE
ABOUT TO EMBARK
ON A CAMP C.O.R.E.
TRADITION I'M
PARTICULARLY
FOND OF—

SHOW-OFF-ALL-OUR-COOL-TECHNOLOGY-DAY...DAY



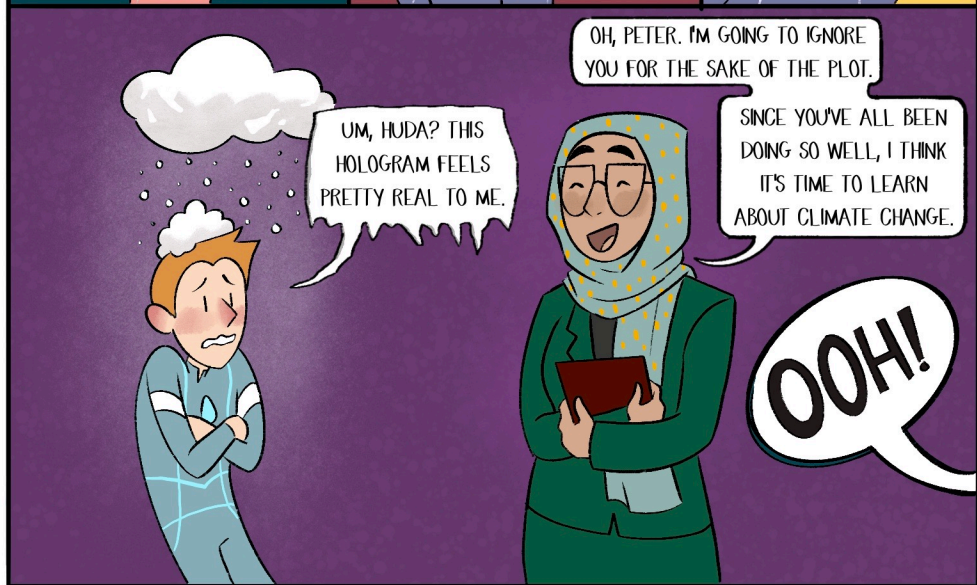
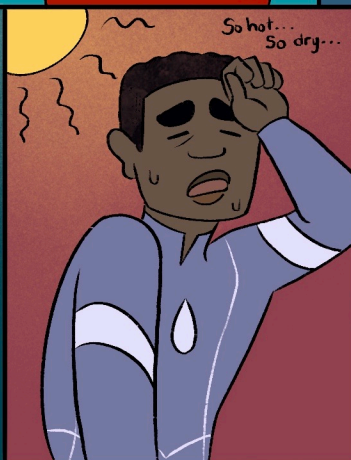


WEATHER SIMULATION ACTIVATED



AT EASE, HUMANS. ALL ASPECTS OF
THIS SIMULATION ARE HOLOGRAMS.
THEY CANNOT HARM YOU.





WHAT YOU'RE EXPERIENCING RIGHT NOW IS CALLED "WEATHER."

CAN ANYONE TELL ME THE DIFFERENCE BETWEEN WEATHER AND CLIMATE?

...WAIT. I ALWAYS THOUGHT THEY WERE DIFFERENT WORDS FOR THE SAME THING.

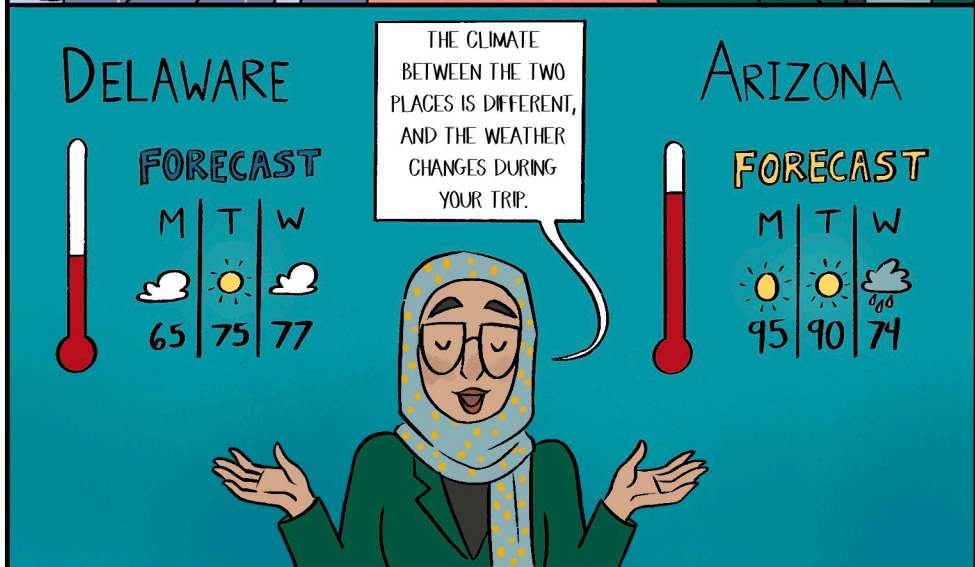
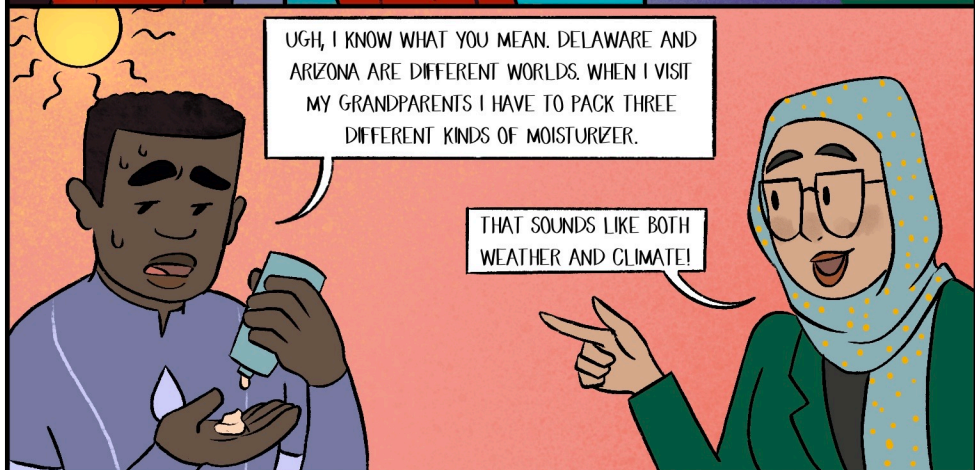
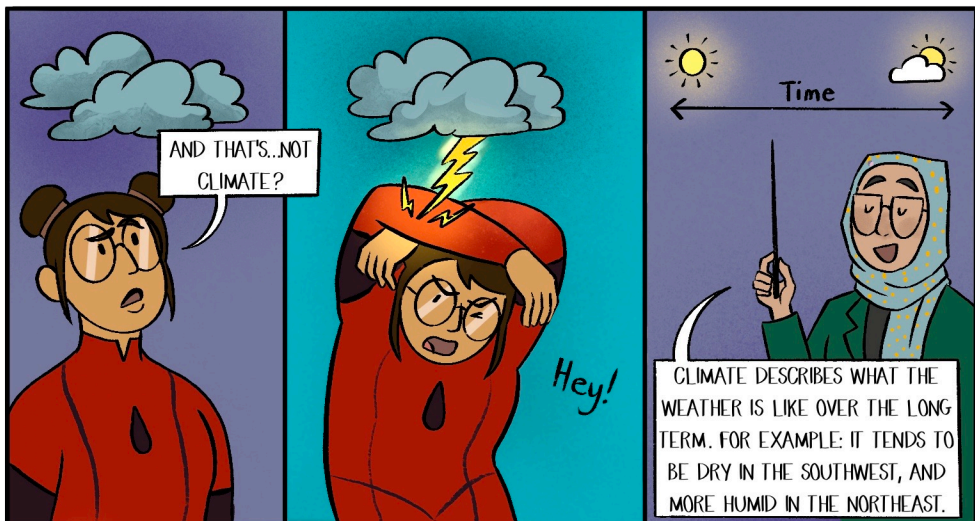
HUH. LET ME SEE IF I CAN TRY TO...

AS GLORIA HAS EXPERTLY DEMONSTRATED, THE WEATHER CAN CHANGE AS QUICKLY AS SOMEONE'S MOOD.

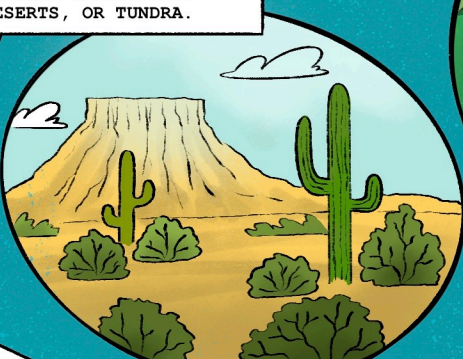
WEATHER IS THE TEMPERATURE, AIR PRESSURE, AND PRECIPITATION YOU EXPERIENCE DAY TO DAY.

COOL! WEATHER POWERS!

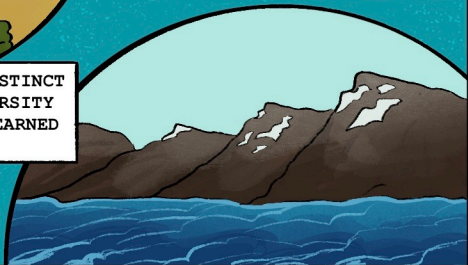
Oh!



THE LOCAL CLIMATE CREATES THE CONDITIONS FOR DISTINCT BIOMES TO DEVELOP SUCH AS TROPICAL RAINFORESTS, DESERTS, OR TUNDRA.



THESE BIOMES CREATE DISTINCT HOMES FOR THE BIODIVERSITY THAT JIJI AND VINCE LEARNED ABOUT EARLIER.



Heh
Heh



THANKFULLY, THE EARTH'S CLIMATE HAS BEEN VERY STABLE DURING THE SPREAD OF HUMAN CIVILIZATION. OF COURSE, IT HASN'T BEEN AS RELIABLE RECENTLY...

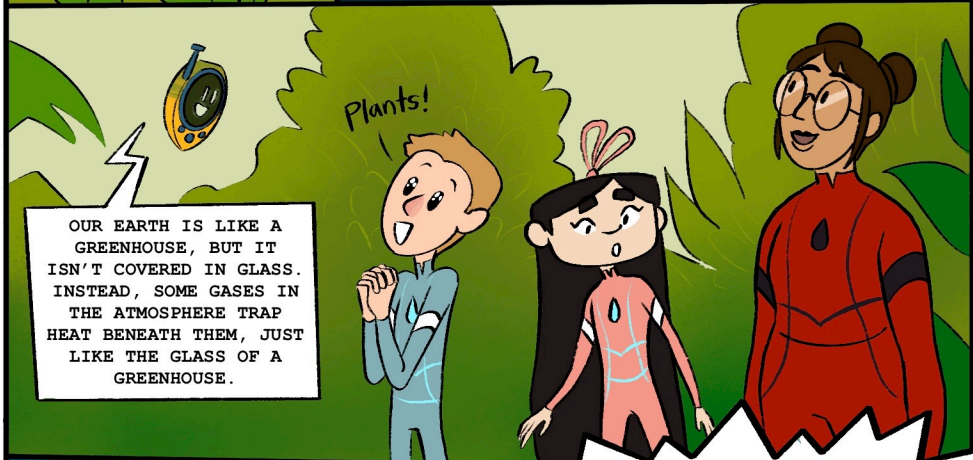
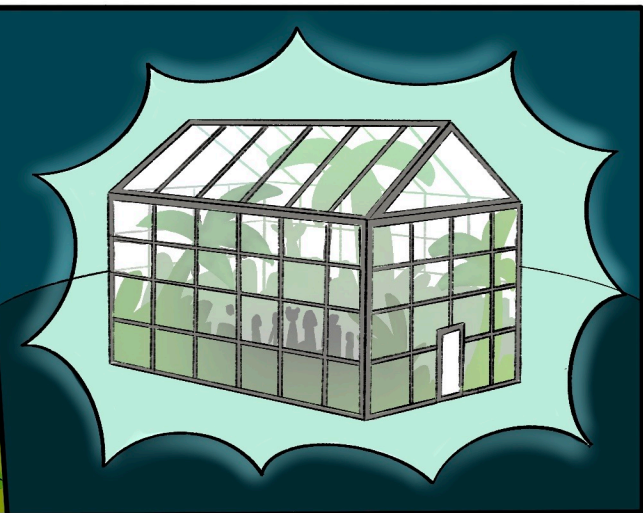


HUH?
WHY?

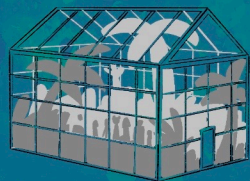


GEN, LOAD THE GREENHOUSE SIMULATION, PLEASE.





WE'LL THINK ABOUT THIS. WITHOUT ANY HEAT TRAPPED, EVERYTHING WOULD FREEZE OVER. OUR EARTH WOULD BE UNINHABITABLE.

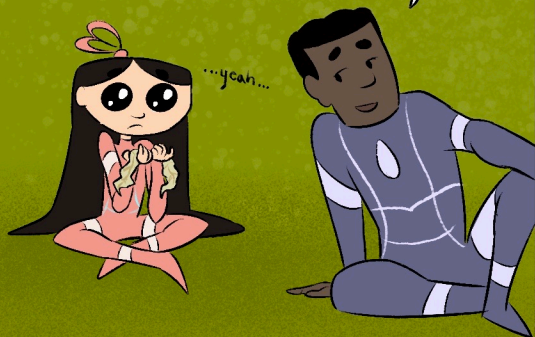


POOF!

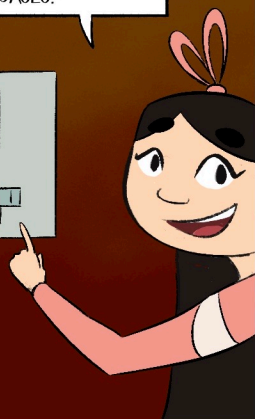
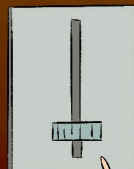


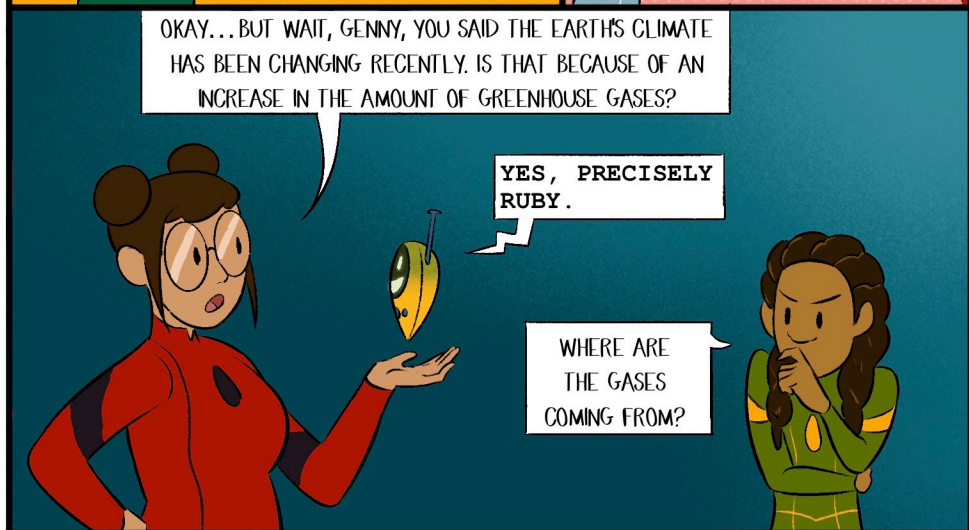
NOOOO, THIS IS WAY TOO SAD. NIX THE ANARCHY, I CHANGED MY MIND. TRAP THAT HEAT!

PERHAPS CHAOS AND STRUCTURE REALLY DO HAVE A HOME TOGETHER.



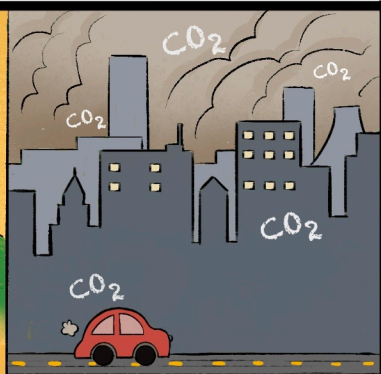
SO WHAT HAPPENS WHEN I CRANK UP THE GREENHOUSE GASES?





THEY COME FROM THE BURNING OF COAL, OIL, AND GAS FOR ENERGY. OUR USE OF FOSSIL FUELS IS INCREASING GREENHOUSE GASES TO THE ATMOSPHERE FASTER THAN ANY TIME IN THE EARTH'S HISTORY.

CO₂

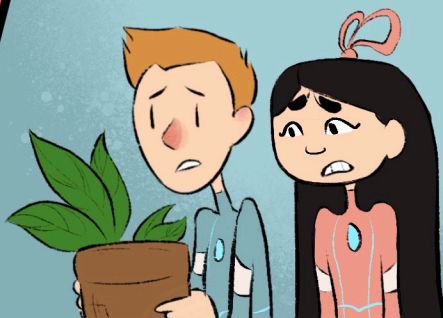


1800'S ----- PRESENT

CARBON DIOXIDE, OR CO₂, IS THE MOST IMPORTANT HUMAN GENERATED GREENHOUSE GAS. IT'S HUMANITY'S NUMBER ONE PRODUCT. EACH YEAR, WE CREATE MORE OF THAT GAS THAN EVERYTHING ELSE WE PRODUCE COMBINED



NO WAY!



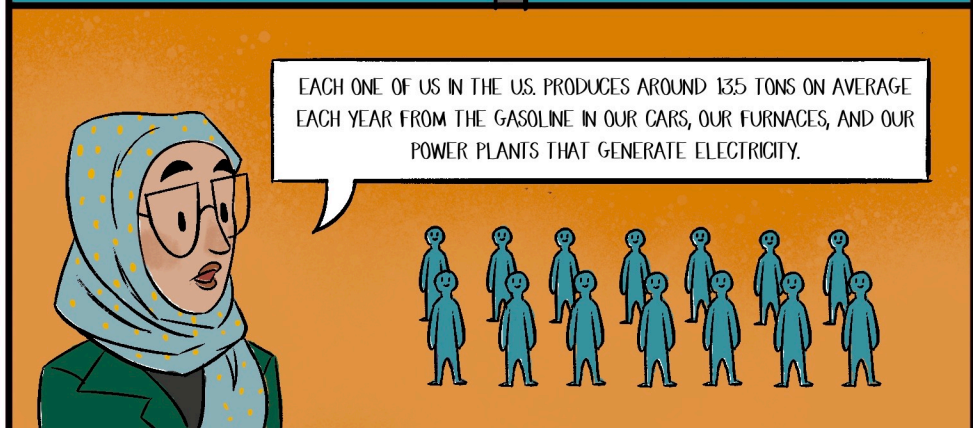
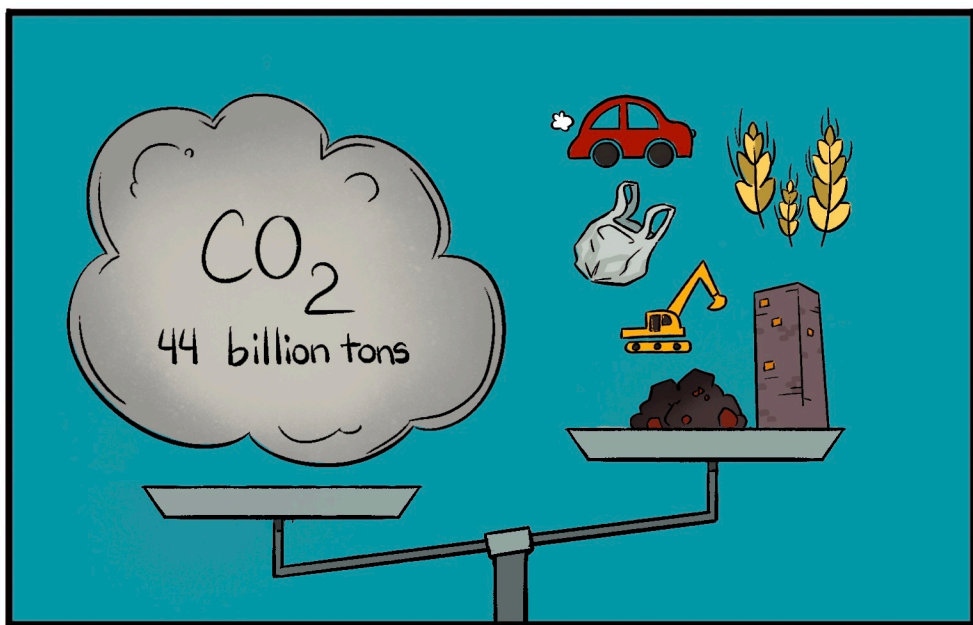
WHAT HUMAN ABSURDITY. OF COURSE THERE IS A "WAY".

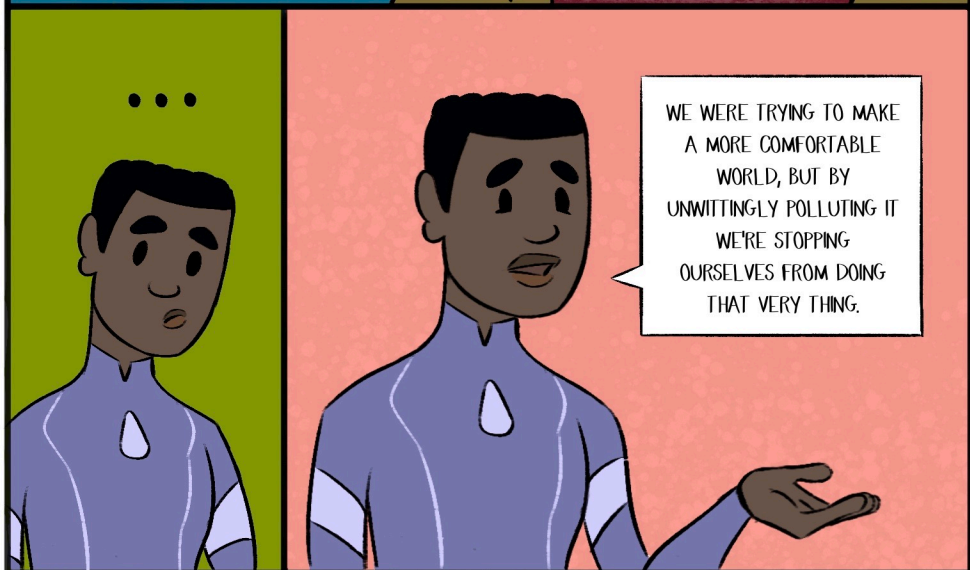
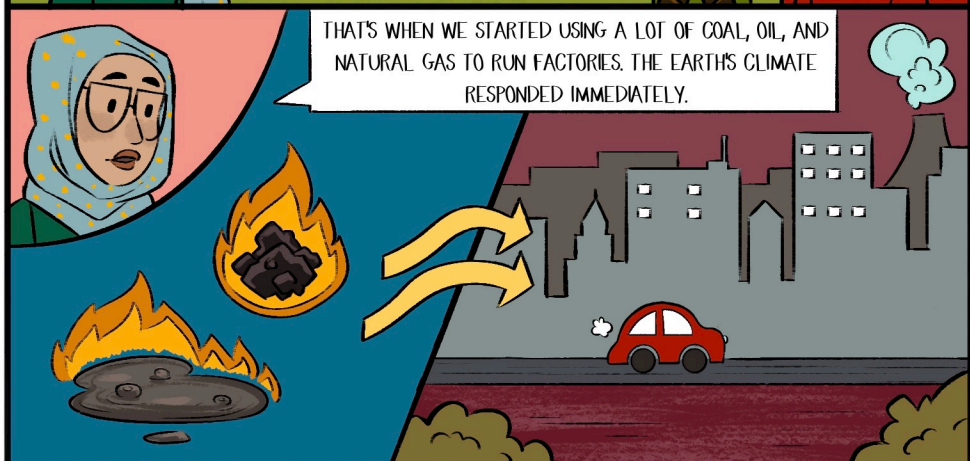
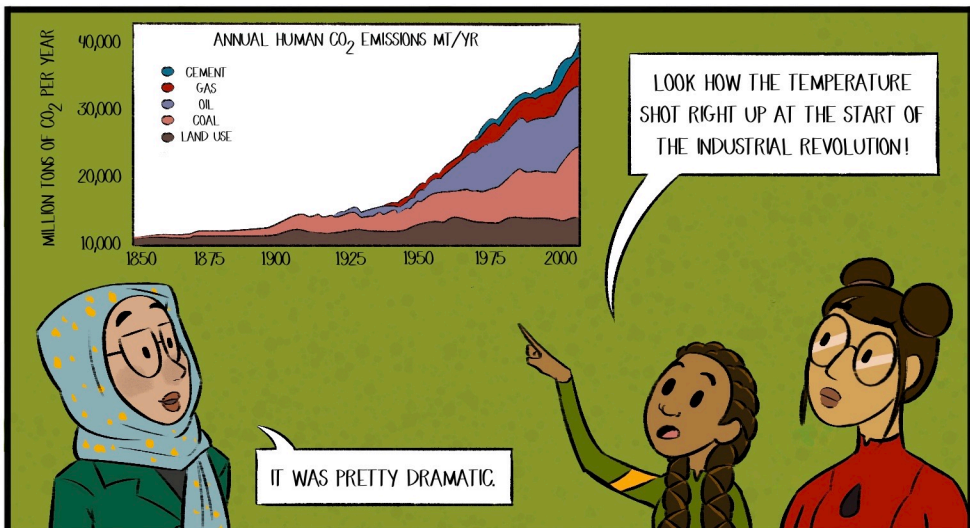


CO₂

I SUPPOSE PEOPLE JUST TEND NOT TO THINK ABOUT IT—CO₂ IS AN INVISIBLE GAS, AFTER ALL, NOT SOMETHING SOLID OR OBVIOUS.







AND IT'S NOT JUST GREENHOUSE GASES. BRENDA TAUGHT ME THAT FOSSIL FUELS ARE THE MAIN SOURCE OF THE AIR POLLUTION THAT HARMS ALL OF US DIRECTLY. IT'S THE LAW OF UNINTENDED CONSEQUENCES! WHEN WE DAMAGE THE ENVIRONMENT, WE HARM EACH OTHER.



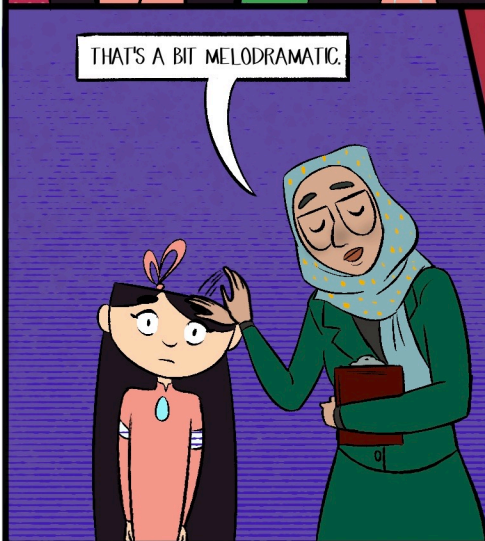
SO...IF IT DOESN'T
SLOW DOWN...



EARTH WILL BECOME A DESERT
WASTELAND, RIGHT?? WE'LL
HAVE TO SCAVENGE FOR FOOD.
OR SAND WILL BE OUR FOOD.



THAT'S A BIT MELODRAMATIC.



BUT THE WARMING OF THE EARTH
DOES DO SOME STRANGE THINGS TO
THE CLIMATE. GEN, SOME
EXAMPLES PLEASE?

OF COURSE.



GLOBAL WEIRDING SIMULATION
ACTIVATED.



SOMEBODY CALL THE
FIRE DEPARTMENT!

AGAIN,
HUMAN, THE
SIMULATION
IS
COMPLETELY
HARMLESS.



WITH CLIMATE CHANGE, SOME PLACES WILL
EXPERIENCE DROUGHT, WHICH GREATLY
INCREASES THE DANGER OF FOREST AND
WILDLAND FIRES.

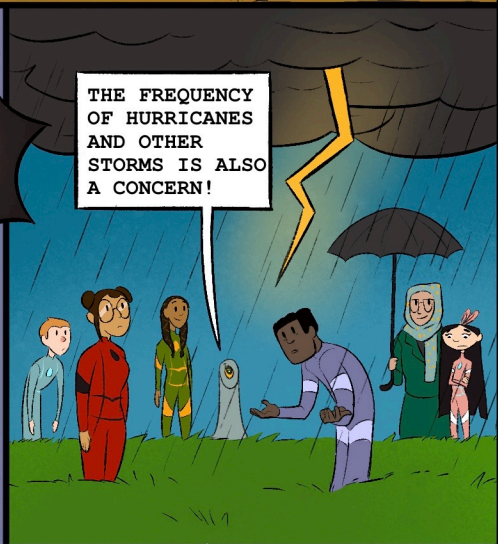


FLASH!!!

BOOM!!!



THE FREQUENCY
OF HURRICANES
AND OTHER
STORMS IS ALSO
A CONCERN!







EVERYONE! GET READY
TO SWIM!




HUH? I'VE ALWAYS WANTED TO BREATHE
UNDERWATER!




GEN! I WANT A
MERMAID TAIL!



INCREASED
TEMPERATURES CAUSE
THE POLAR ICE CAPS TO
MELT. THIS RAISES
WATER LEVELS, WHICH
AFFECTS COASTAL
REGIONS WHERE ALMOST
HALF OF THE GLOBAL
POPULATION LIVES.



'GLOBAL WEIRDING'
IS A VERY
APPROPRIATE NAME



ESSENTIALLY, EVERYTHING IS — WHAT DO
THE KIDS SAY NOW? — "OUT OF WHACK";
AS EARTH'S SYSTEMS SHIFT AND CHANGE.



FLOODING SCENARIO
DEACTIVATED.

THIS ALL FEELS SORT OF
OVERWHELMING—WHAT IF WE CAN'T
FIX IT IN TIME?



YEAH, IT FEELS SO... BIG, LIKE WE CAN'T
DO ANYTHING TO MAKE A DIFFERENCE.



Creeep

HOW DO WE GET THE WORLD TO CARE WHEN IT FEELS
LIKE THEY DON'T?



Creeep





COOPERATIVE
OPERATIVES,

IT'S TIME TO REBUILD EARTH.

GEN—ASSIST! INITIATE
POTENTIAL CLIMATE
SOLUTIONS! TO ARMS!



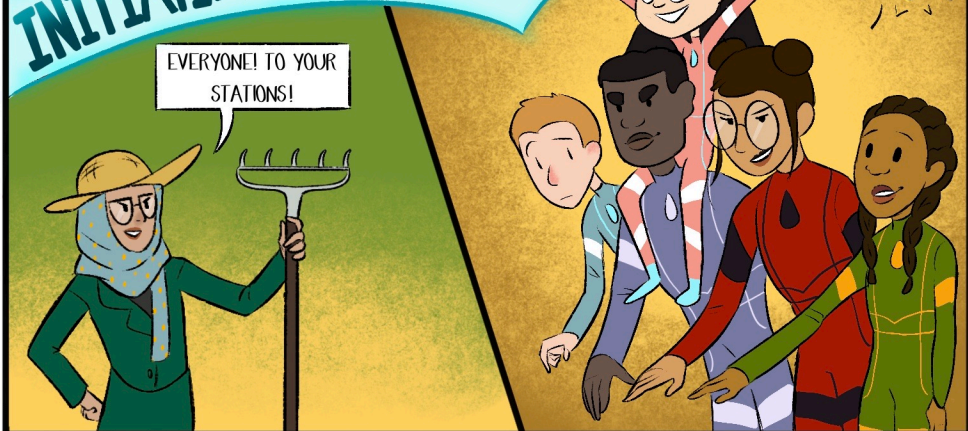
IS THAT A SWORD??

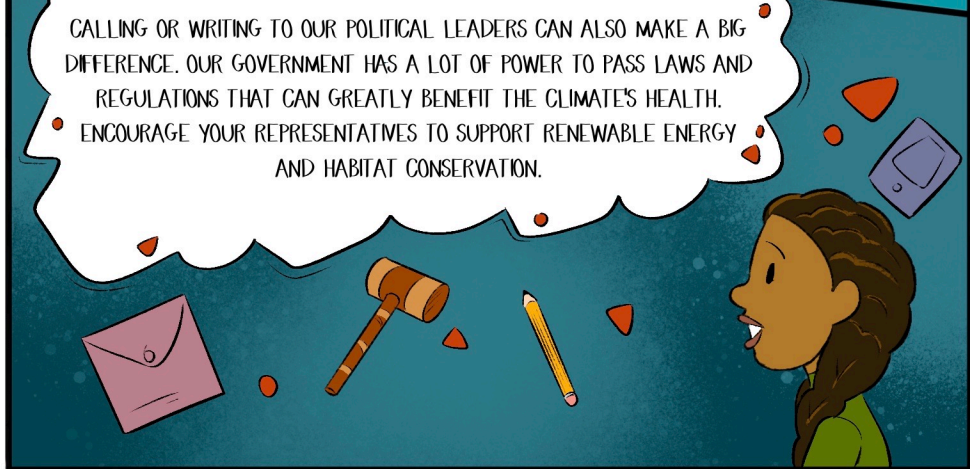
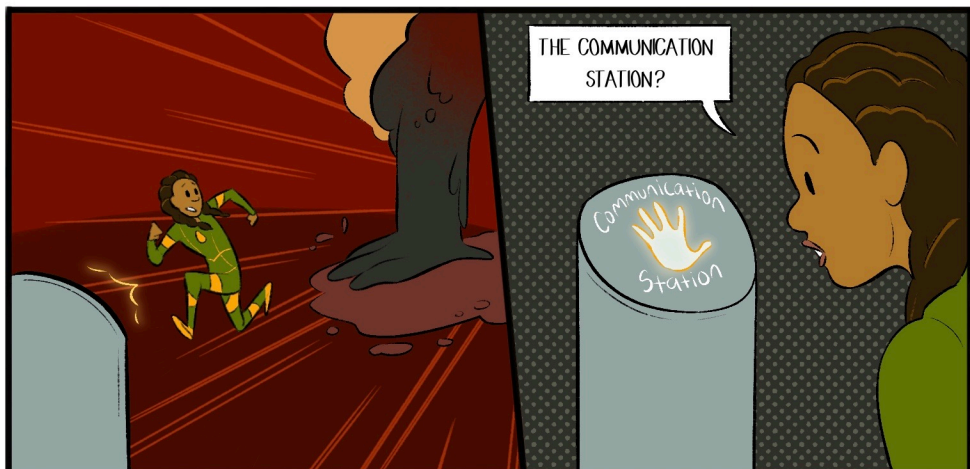
MUCH BETTER.

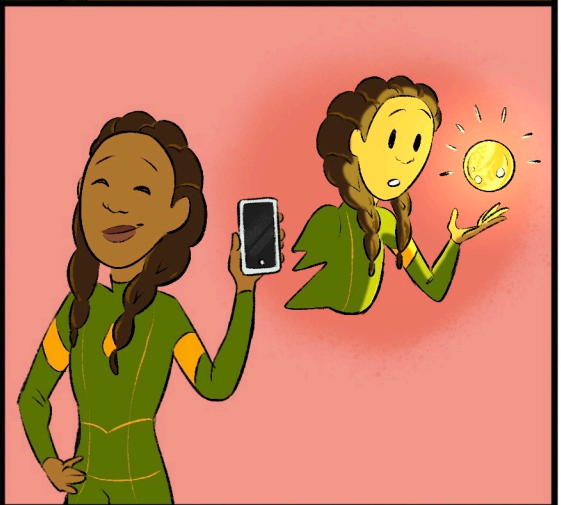
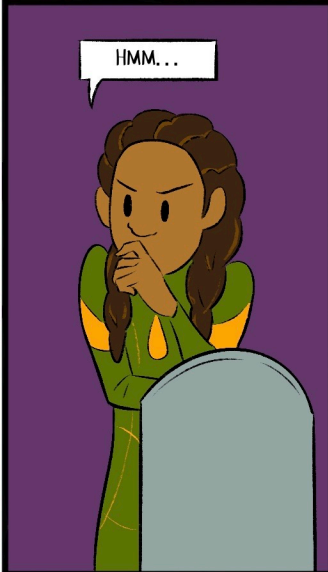


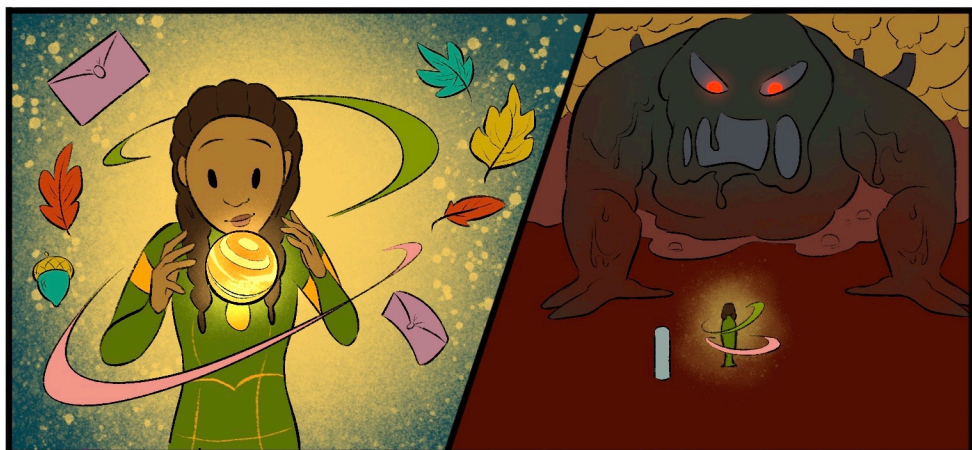
INITIATING POTENTIAL CLIMATE SOLUTIONS

EVERYONE! TO YOUR
STATIONS!











THE ENERGY AND RESOURCES USED IN THE PRODUCTION OF CLOTHES AND OTHER PRODUCTS CONTRIBUTES TO GLOBAL WARMING. SO ANYTHING WE DO TO REUSE ITEMS INSTEAD OF JUST THROWING THEM AWAY HELPS! BUT REMEMBER, INVESTING IN CLEANER ENERGY AND RESOURCES USED TO PRODUCE THE ITEMS IN THE FIRST PLACE GIVES AN EVEN GREATER RETURN!

